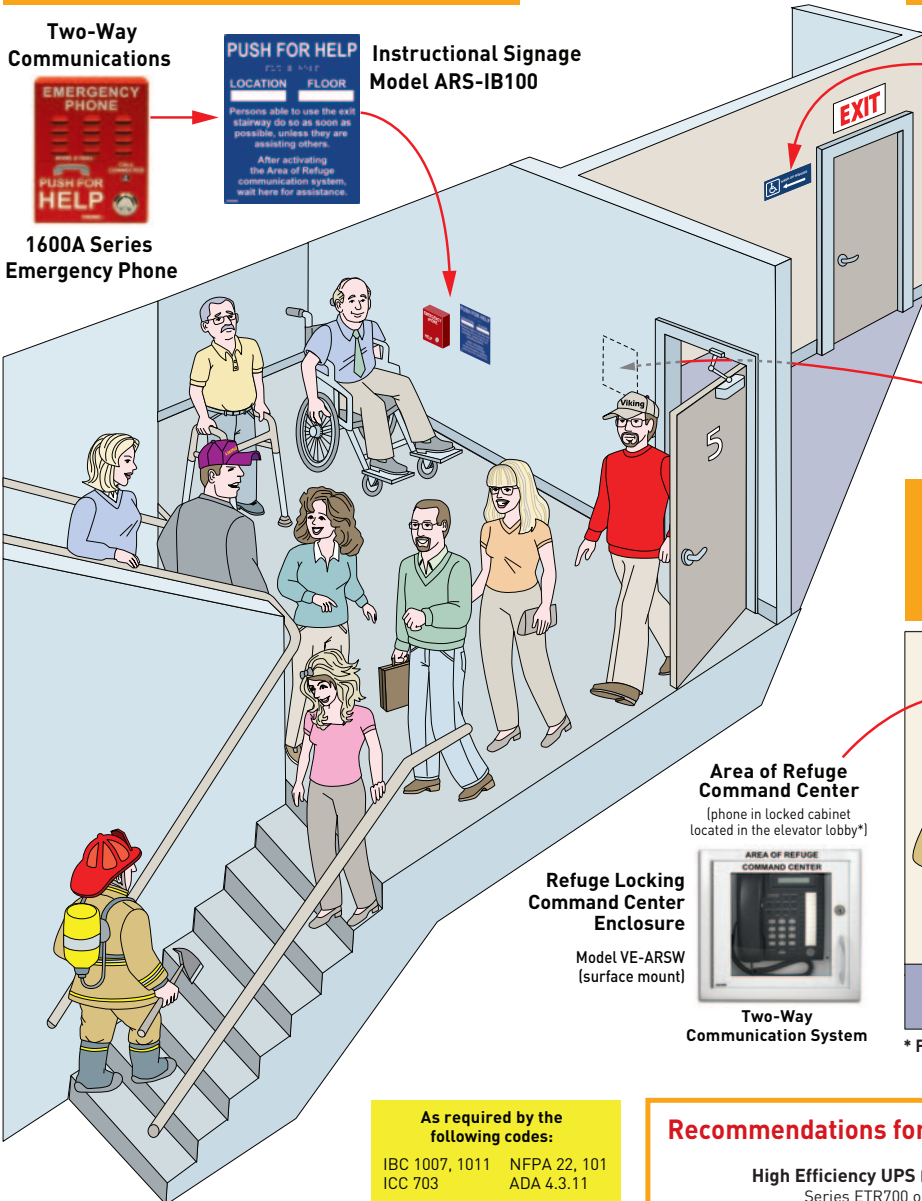


### Requirements for INSIDE the Area of Refuge

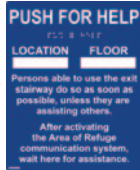
### Requirements for OUTSIDE the Area of Refuge



**Two-Way Communications**

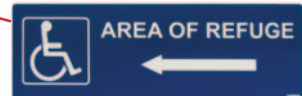


**1600A Series  
Emergency Phone**



**Instructional Signage  
Model ARS-IB100**

**Directional Signage**



**Model ARS-DLB100 (Left arrow)  
Model ARS-DRB100 (Right arrow)**



**Tactile Signage**

**Model ARS-TB100**

### Requirements for the Area of Refuge Lobby Command Center

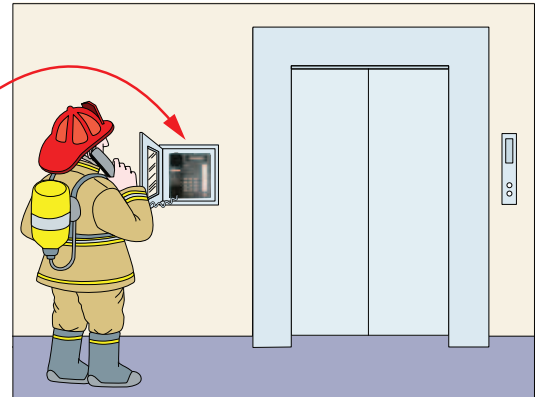
**Area of Refuge Command Center**  
(phone in locked cabinet located in the elevator lobby\*)



**Refuge Locking Command Center Enclosure**

**Model VE-ARSW  
(surface mount)**

**Two-Way Communication System**



\* For buildings under 60 ft. For taller buildings, the Refuge Command Center phone should be located in the Fire Command Center.

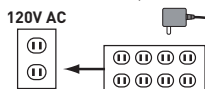
**As required by the following codes:**

IBC 1007, 1011 NFPA 22, 101  
ICC 703 ADA 4.3.11

### Recommendations for 6 or Less Area of Refuge Emergency Phones

**High Efficiency UPS**  
(Tripp-Lite model Internet55U or equivalent)

**6 Port Line Concentrator**

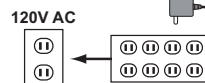


Connect up to 6 Area of Refuge emergency phones (1600A Series) to one command center phone and one C.O. line. UPS must have a minimum of 90 minute backup.

### Recommendations for 7-24 Area of Refuge Emergency Phones

**High Efficiency UPS** (Minuteman Entrust Series ETR700 or equivalent)

**Panasonic KX-TA824**



Using a Panasonic KX-TA824 with optional expansion cards KX-TA82483 and KX-TA82470, connect up to 24 Area of Refuge emergency phones (1600A Series) to one command center phone and one C.O. line. UPS must have a minimum of 90 minute backup. Note: The Panasonic KX-TA824 can be expanded (in increments of 6) up to 144 ports by adding a Viking LC-6 to each station port.

## Analog and VoIP ADA Compliant Emergency Phones

The **1600A Series** (Analog) and **1600-IP Series** (VoIP) ADA Compliant Emergency Phones are designed to provide quick and reliable handsfree communication. The **1600A Series** works with any standard analog telephone line or analog phone system station port. All phones meet ADA requirements for elevator / emergency telephones and can be programmed from any touch tone phone. The phones can dial up to 5 programmable emergency numbers, as well as 2 central station numbers.

Both the **1600A Series** (Analog) and **1600-IP Series** (VoIP) Emergency Phones are available in a large selection of chassis, color, and size configurations to work in many different applications.

For outdoor installations where the unit is exposed to precipitation or condensation, select **1600A Series** and **1600-IP Series** phones are available with Enhanced Weather Protection (EWP). EWP products feature foam rubber gaskets and boots, sealed connections, gel-filled butt connectors, as well as urethane or thermal plastic potted circuit boards with internally sealed, field-adjustable trim pots and DIP switches for easy on-site programming. For more information on EWP, see DOD 859.

For more information on the **1600A Series** (Analog), see DOD 215 for the **1600-IP Series** (VoIP), see DOD 255.



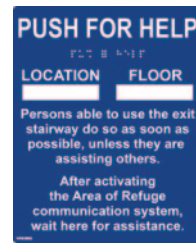
## Area of Refuge Signage

The **ARS Series** Area of Refuge Signs are designed to comply with IBC 1007, 1011, ADA 4.3.11, NFPA 22, 101 and ICC 703 code requirements. The Instructional, Tactile and Directional signs are made from Acrylic or durable ABS plastic and are designed to adhere to the wall with the provided double sided foam tape.

See DOD 235 for more info on the ARS Series.



**ARS-TB100**  
Tactile Blue Braille and raised letter sign to be placed next to the Area Of Refuge (stairwell exit) door.



**ARS-IB100**  
Instructional Blue Braille and Raised letter sign to be placed next to the Area of Refuge emergency phone (E-1600A, etc.)



**ARS-DLB100**



**ARS-DRB100**

Directional Blue signs with left or right arrow to be placed next to exit doors without Area Of Refuge.

## Surface Mount Command Center Cabinet

Each Area of Refuge is required to have a central control point (Command Center) where the emergency phones call for assistance.

In low rise buildings (less than 60 ft. tall) the Command Center can simply be a telephone mounted in a cabinet located on the ground floor of the elevator lobby. The **VE-ARSW** cabinet is ideal for this application, allowing you to mount a single line phone or PABX Key phone.

The **VE-ARSW** is a 13" x 13.5" x 4" surface mount metal cabinet with a hinged door, roller catch, chrome handle, phone mounting studs and optional lock. The lock is equipped with a breakaway cam allowing emergency personnel to force the door open if the key cannot be found.

See DOD 237 for more info on the VE-ARSW.

Shown with Panasonic 824 PABX key phone model KX-T7731 (not included)



## 6 Port Line Concentrator for Emergency Phones

The **LC-6** Line Concentrator eliminates the monthly charges for a dedicated line to each elevator. The **LC-6** is designed to be used with the Viking **1600A Series** Elevator Phones. Up to six of these emergency phones can communicate with authorized personnel on 3 other phones within a building, or add a telephone line to allow communication outside the building. A call initiated by an emergency phone can dial internally, externally, or both. Any other phones that are activated will be bridged with authorized personnel.

Per ASME A17.1 requirements, the **LC-6** can verify the operability of the telephone line on a daily basis and with the optional Viking model LV-1K line verification alarm panel, can display an "Elevator Communications Failure". **Note: Per ASME A17.1 requirements, the LC-6 must be used with a battery backup (UPS) capable of keeping the LC-6 running for up to 4 hours.**

See DOD 245 for more info on the LC-6.

